



VALO

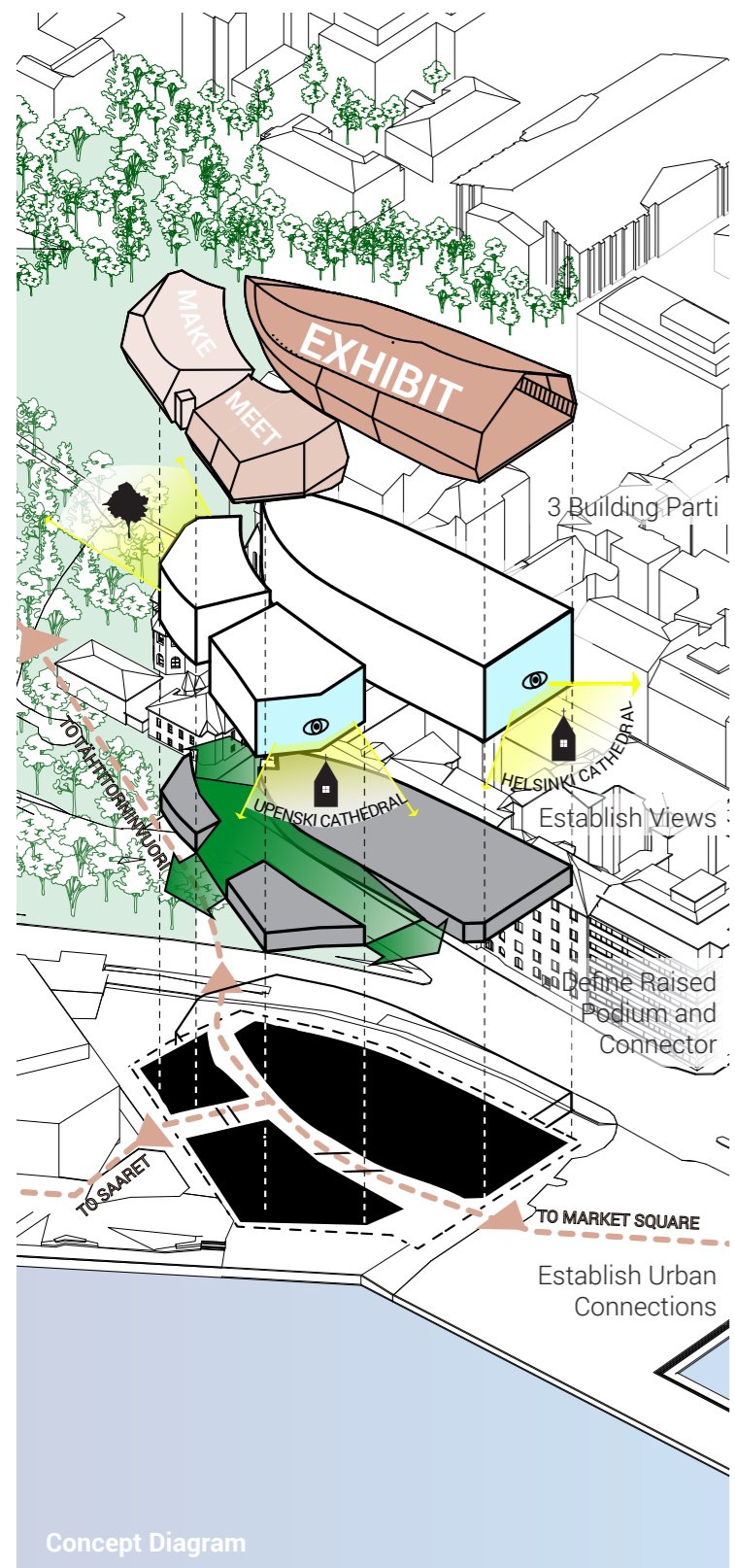
illuminating Helsinki's Future

Our proposal for the New Museum of Architecture and Design in Helsinki envisions a seamless integration with the cityscape, anchored by a raised podium that serves as a central spine connecting Tähtitorninvuori Park, the Saaret project, and Market Square. This design not only grounds the museum within its urban context but also frames views of Helsinki Cathedral and Uspenski Cathedral, creating a deep connection to the city's cultural heritage.

Oblique Aerial View

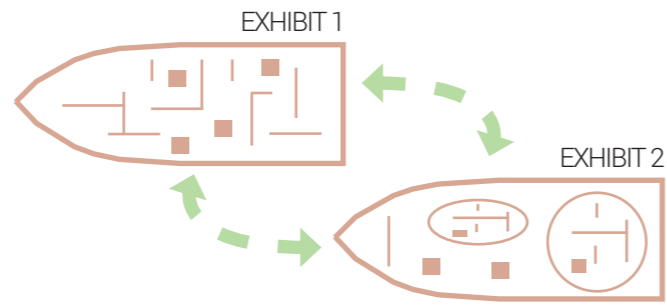
Cultural Axis: Bridging History and Innovation

The museum's three-building layout, focused on exhibits, meetings, and creative making, radiates from the central spine, which acts as a unifying element. The raised podium creates a natural extension of the city's green spaces, linking the museum to the broader urban fabric. This approach allows the museum to merge with its surroundings, enhancing the cultural landscape of Helsinki while fostering a sense of continuity and accessibility.



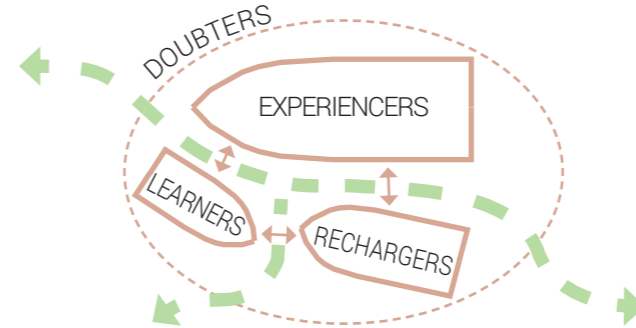
Vision for a Future-Making Museum

The museum's design emphasizes adaptability, not only through flexible spaces that can host diverse programs and exhibitions but also by accommodating seasonal changes. The building's architecture supports a variety of gallery layouts, ensuring it can evolve with the changing needs of its users. Whether for intimate contemplation or large-scale exhibits, the museum remains a dynamic cultural hub, nurturing a sense of belonging and connection within Helsinki's vibrant landscape.



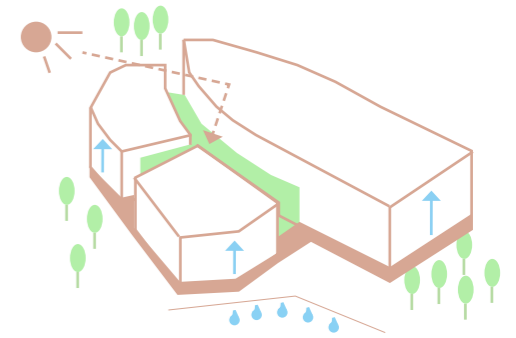
User Experience and Engagement

The museum offers an immersive experience tailored to a diverse range of visitors, including doubters, learners, experiencers, and rechargers. Each visitor type is engaged through thoughtfully curated spaces that invite exploration and reflection. From expansive galleries to quiet nooks, the design caters to varying needs, ensuring that every visitor finds a meaningful connection to the architecture and the surrounding landscape. This approach creates lasting impressions of beauty, innovation, and a deep connection to Helsinki's cultural tradition.



Sustainability Considerations

The proposal integrates ecological, social, and economic sustainability through several key strategies. Locally sourced materials minimize environmental impact, while solar energy collection enhances the building's efficiency. The museum's design lifts the ground plane, offering resilience against rising sea levels. Additionally, the incorporation of natural elements within the building ensures that the architecture remains harmonious with the environment, fostering a sustainable and vibrant cultural landmark in Helsinki.



Area Summary (By main functions in brief)

Galleries	2,338 m ²
Foyer / Lounge	1,782 m ²
Event and Conference Spaces	665 m ²
Project and Workshop Spaces	313 m ²
Library and Resource Center	316 m ²
Shop Facilities	402 m ²
Cafe / Restaurant	304 m ²
Museum Depot (Extra Function)	165 m ²
Office and Staff Spaces	490 m ²
Museum Logistics Space	702 m ²
Technical Workshops	450 m ²
Main Kitchen	184 m ²
Event and Retail Support Areas	500 m ²

Total Net Floor Area (NFA) 8611 m²

Facility Services	288 m ²
Circulation Spaces	included into GFA
Technical Installation Spaces	920 m ²

Area Summary By Floor

Ground Floor	3,096 m ²
First Floor	2,999 m ²
Second Floor	3,261 m ²
Third Floor	2,999 m ²

Total Gross Floor Area (GFA) 12,355 m²



View from Market Square



View from the Sea



Main Foyer View

1 Amadeus Granite

Locally sourced, this granite reflects Finland's geological heritage with its neutral tones and subtle red hues, grounding the museum in its natural environment.

2 Arctic White Granite

A striking contrast to Amadeus Granite, inspired by Helsinki's cobblestone streets, celebrating the city's unique urban texture.

3 Corten Steel

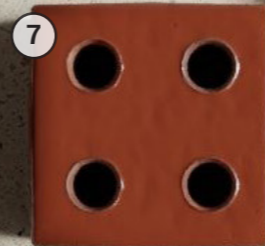
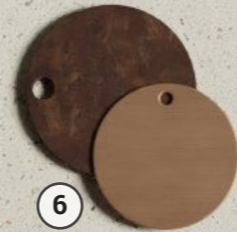
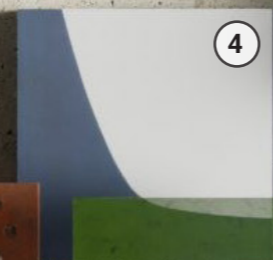
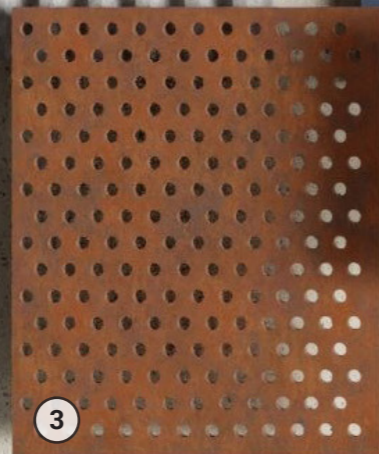
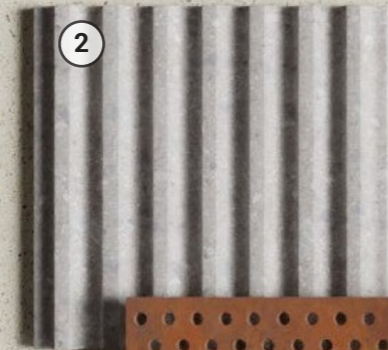
Chosen for its durability and timeless patina, Corten Steel connects the museum to Helsinki's industrial legacy and ages gracefully.

4 Ceramic Tile

Bringing warmth and texture to interiors, these tiles draw inspiration from traditional Finnish ceramics, enhancing the museum's tactile experience.

5 Three Form Flek

Crafted from recycled materials, this terrazzo-like pattern adds color and sustainability to the design, aligning with modern Finnish innovation.



6 Copper

Used on Finnish façades, copper develops a green patina over time, linking the museum to Helsinki's architectural tradition.

7 Bloc by Ronan and Erwan Bouroullec

This modern reinterpretation of traditional brickwork is inspired by Aalto's experimental designs, bridging historic and contemporary architectural practices.

8 Foresso

A composite of off-cut timber and wood dust, showcasing sustainable forestry practices and the versatility of timber in Finnish design.

9 Birch

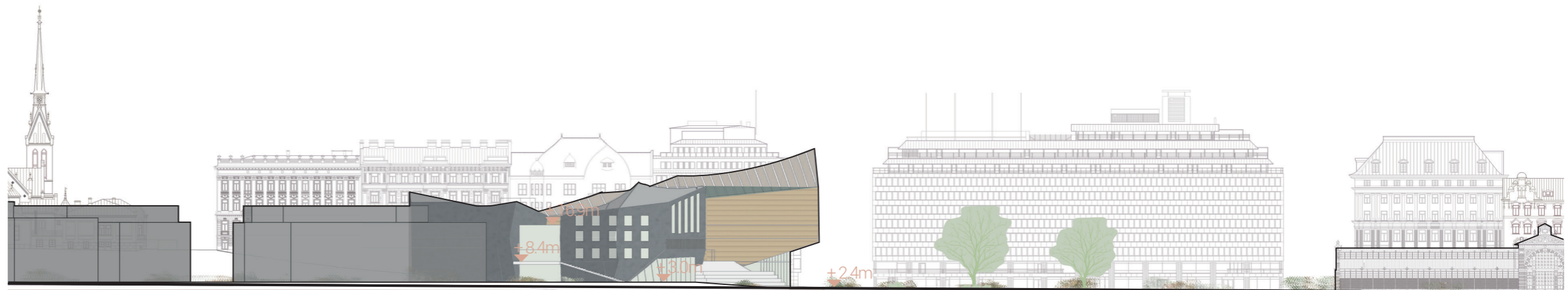
Native to Finland, birch wood creates warm, inviting interiors that resonate with the natural landscape, symbolizing renewal and resilience.



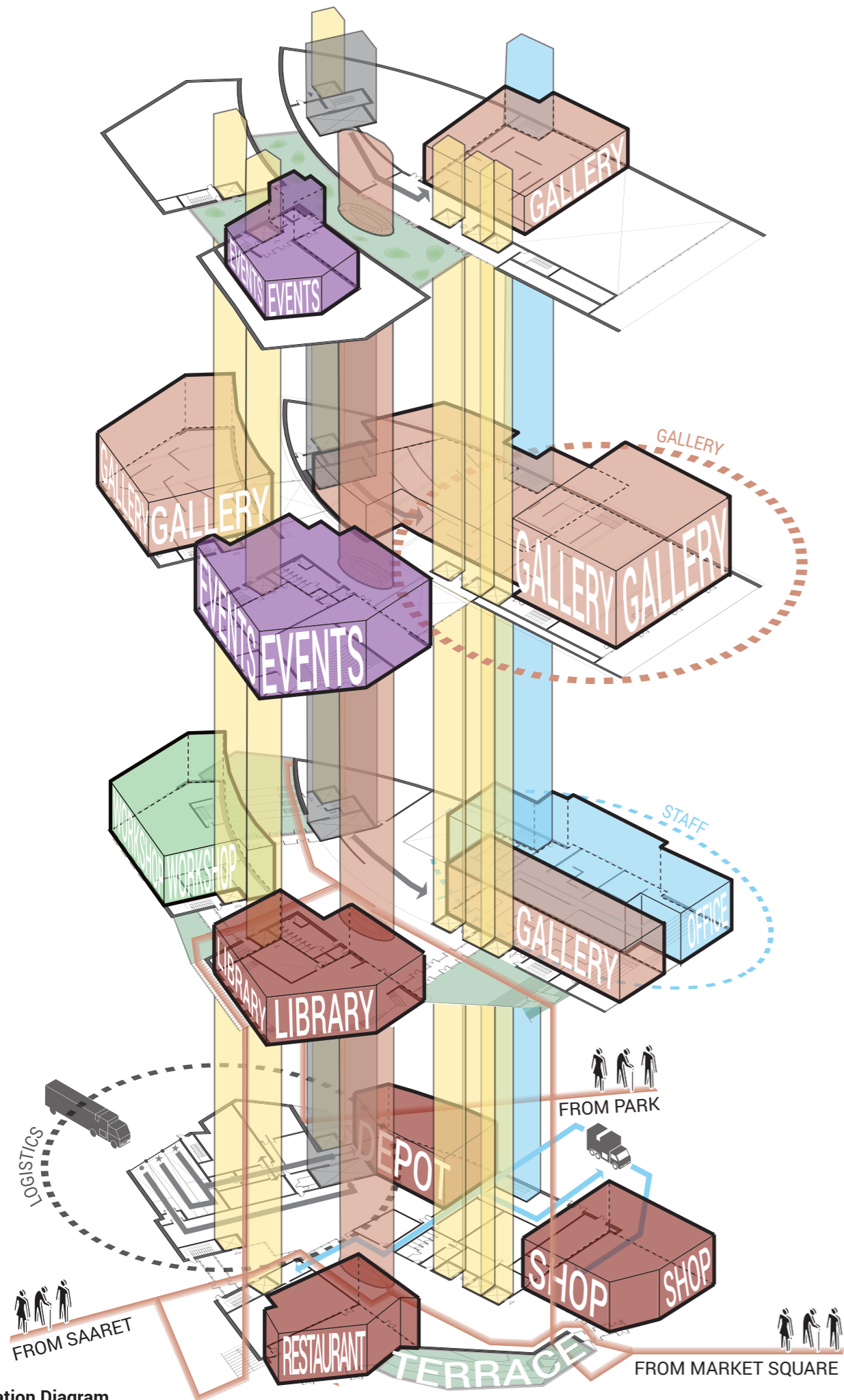
Site Plan | 1:1000

Glacial Forms and Maritime Silhouettes

The site plan and seaside elevation illustrate the seamless integration of the museum with the SAARET project, blending the landscape into the design. Multiple exterior pathways invite visitors to approach the museum from various angles, enhancing accessibility and engagement. The two buildings closest to the sea evoke the imagery of glacial blocks, while the building behind resembles a boat, reflecting Helsinki's maritime heritage. The roofs are sculpted to mimic the natural waves and ship sails, creating a dynamic and fluid silhouette that connects the architecture to the surrounding seascape and urban context.



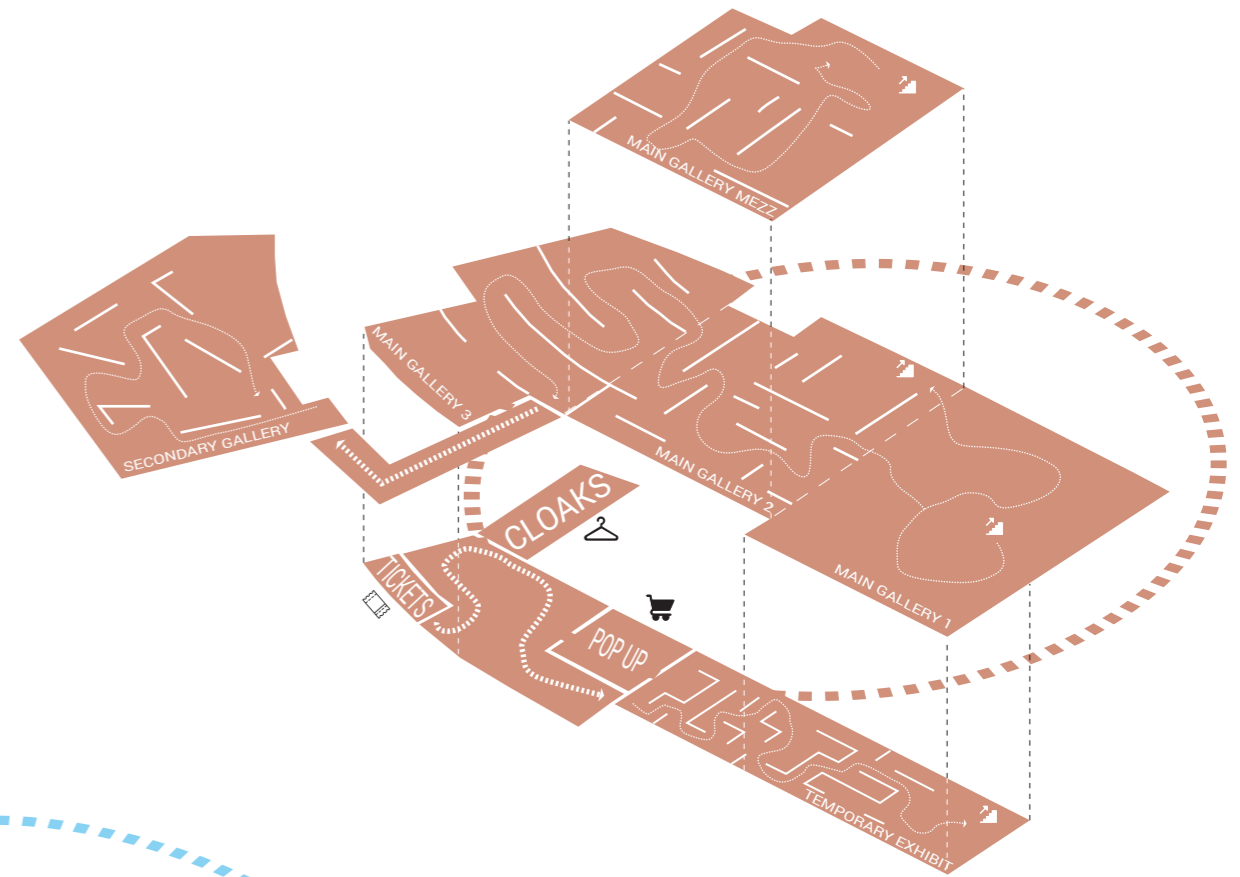
Eteläranta Elevation | 1:1000



Circulation Diagram

Visitor

The museum offers tailored experiences for each visitor type. **Doubters and Rechargers** enjoy access to public terraces with interior views into workshops and galleries, as well as exterior city vistas for moments of reflection. **Experiencers** freely explore dynamic gallery spaces, fully immersing in the exhibits. **Learners** engage with workshop and project areas, gaining insights into the creative processes and technical aspects of the museum. Each journey is designed to cater to diverse interests and enhance the overall experience.

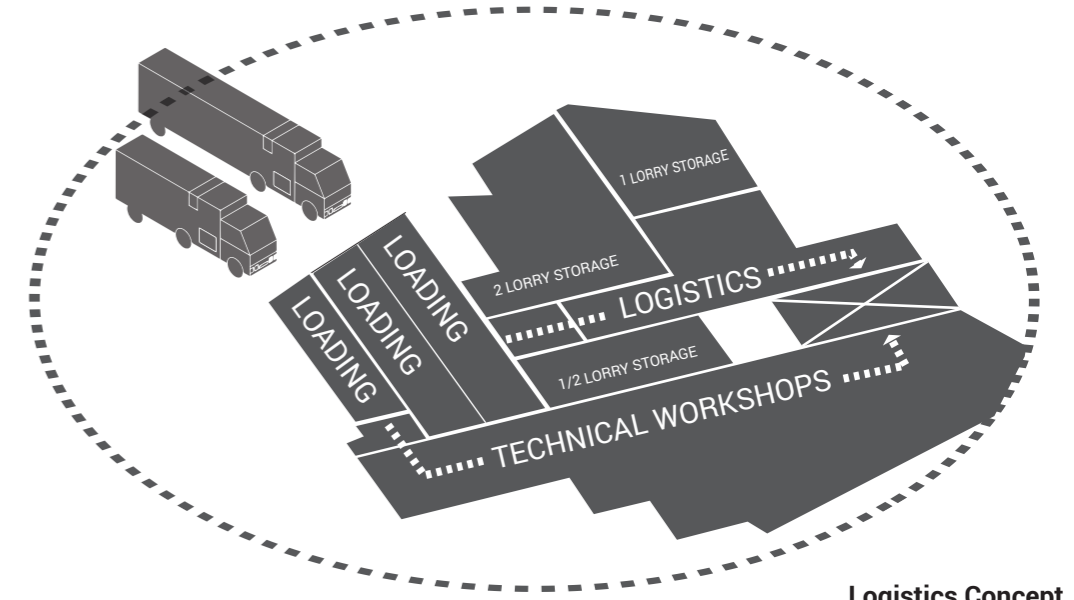


Staff

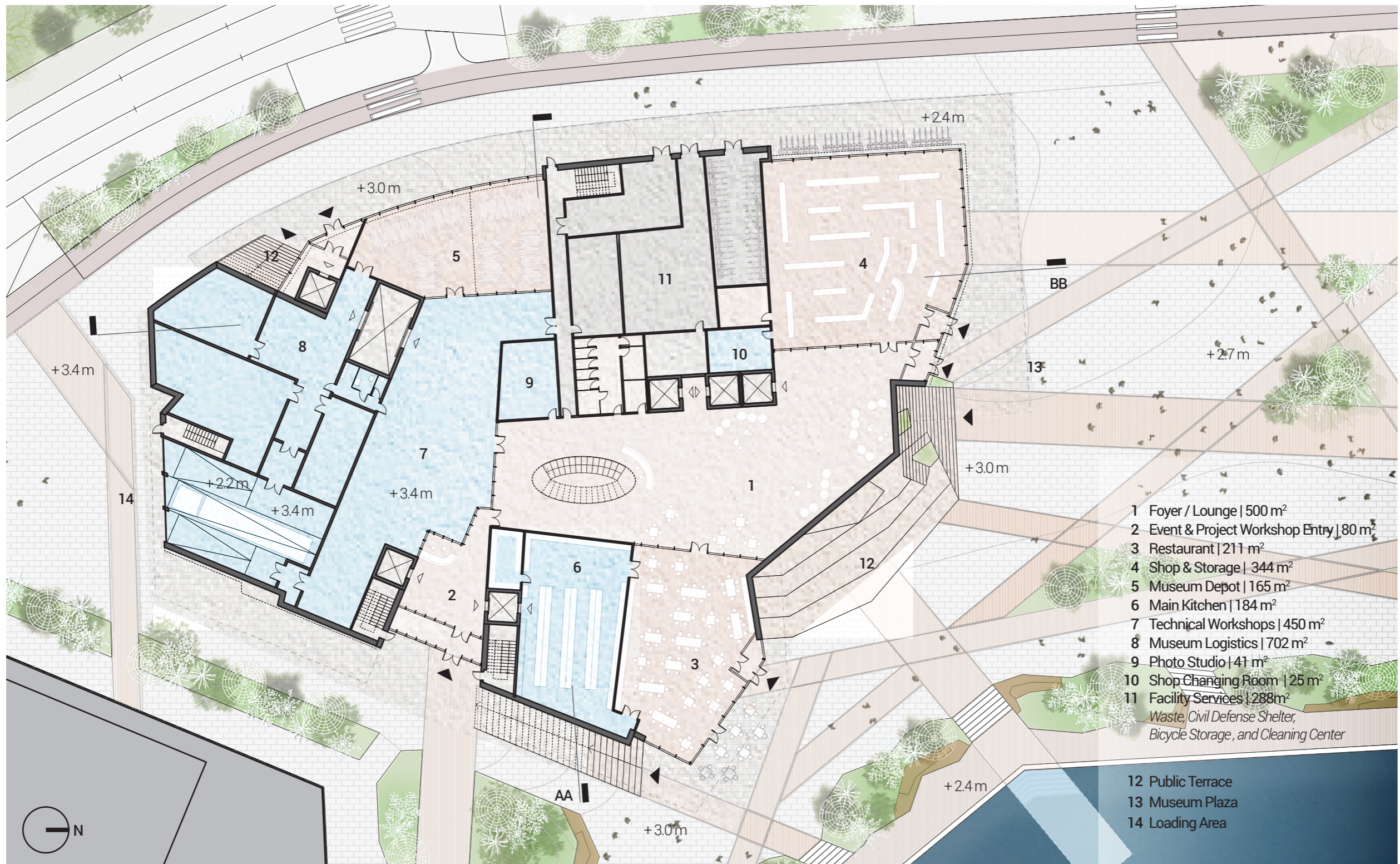
The staff access within the museum is meticulously designed for **privacy, security, and efficiency**. Staff members enter through a **dedicated, separate entrance**, which leads to contained private areas. From there, they utilize a **dedicated interior stair and elevator core**, providing seamless access to all levels and direct pathways through various lobbies to their appropriate locations. This strategic layout ensures that staff can navigate swiftly and securely to maintain operational integrity and enhancing the visitor experience.

Logistics

The logistics circulation for the loading portion of the museum is meticulously organized to ensure **seamless and efficient operations**. The design incorporates **dedicated loading docks** for both the museum's logistics and the technical workshops, strategically positioned to allow for **uninterrupted access to the main freight route**.



Logistics Concept



Ground Level Plan | 1:400

The ground level supports the museum's logistical needs with a loading area, restaurant, and shop. The lower level foyer acts as a transitional space, facilitating movement between functional areas. Natural light fills the space through the glass-enclosed central foyer, while the feature staircase provides vertical connectivity, guiding visitors up to the primary museum entry on the raised podium level.



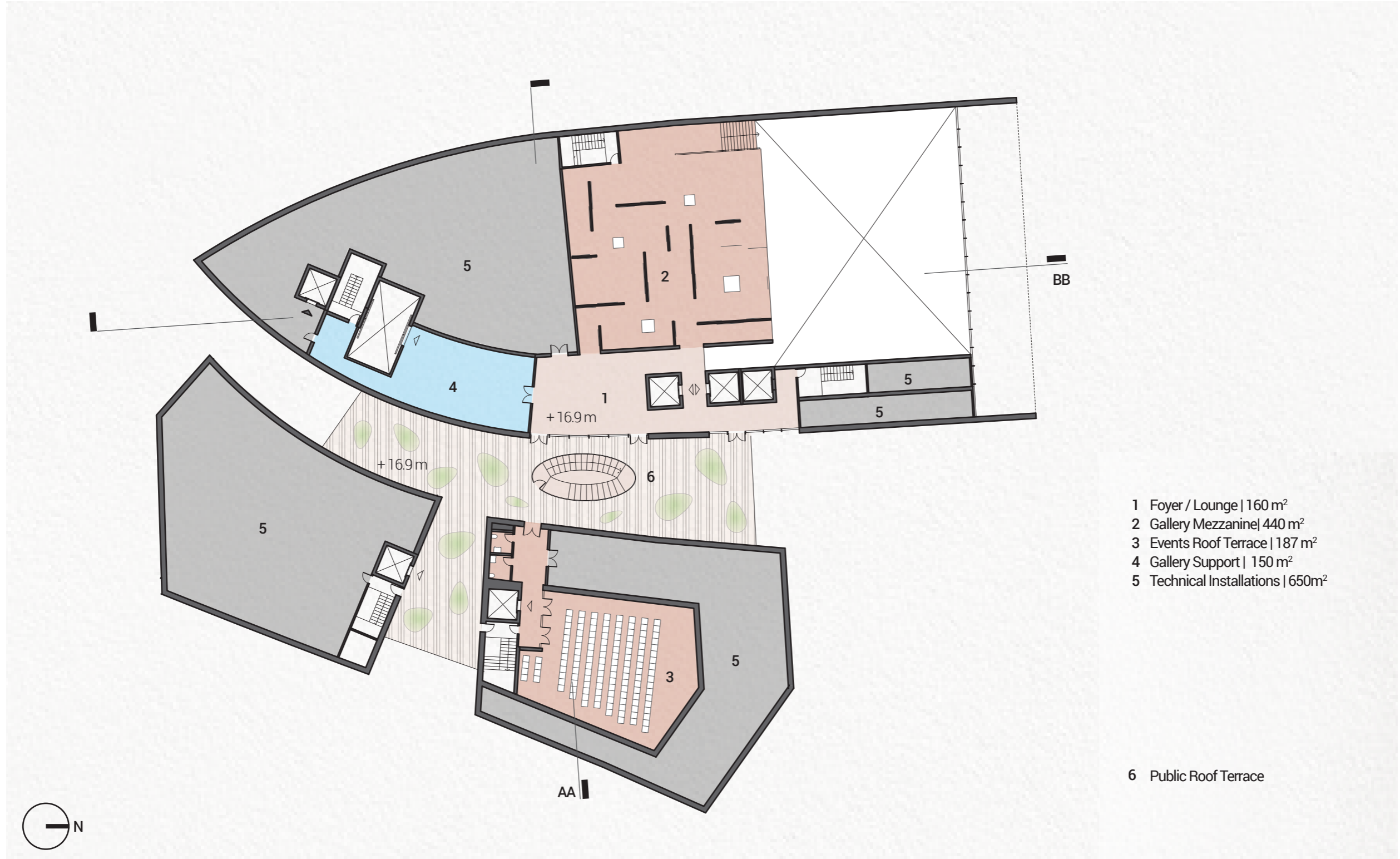
First Level Plan | 1:400

The first level (raised podium) is the museum's main entry point, featuring ticketing, cloaks, and access to temporary exhibits. This level also includes staff offices, a library/café, and makerspaces for hands-on learning and creation. The glass-enclosed central foyer floods the space with light, while the feature staircase connects visitors to the galleries and event spaces on the upper levels, creating a seamless vertical flow.



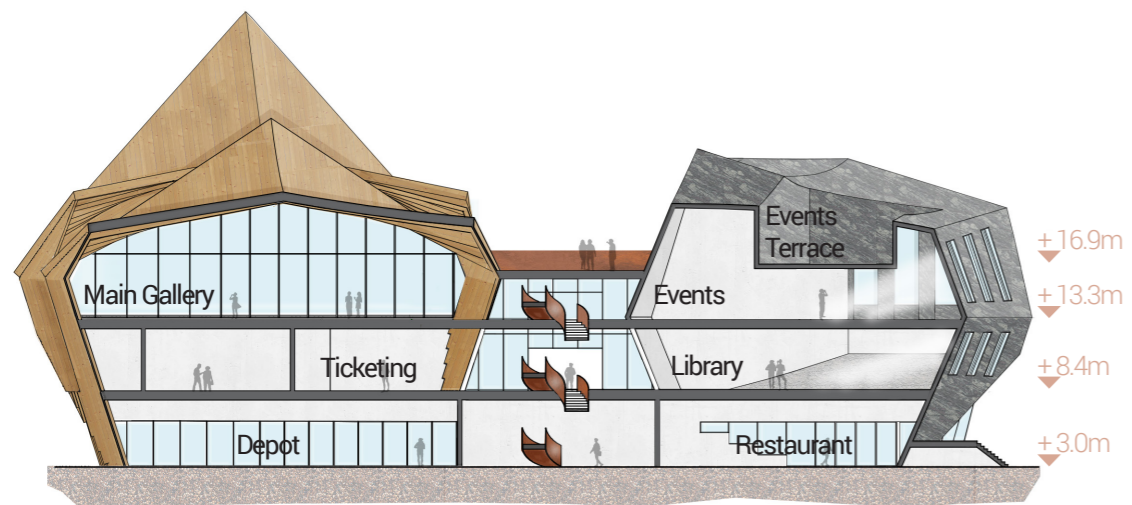
Second Level Plan | 1:400

The second level is dedicated to the museum's main exhibitions, with a flexible gallery that can be divided into three sections. A second gallery and a versatile events space expand the programming possibilities. The central foyer allows light to penetrate the interior, creating a vibrant exhibition environment, while the staircase links this level to the rest of the museum.

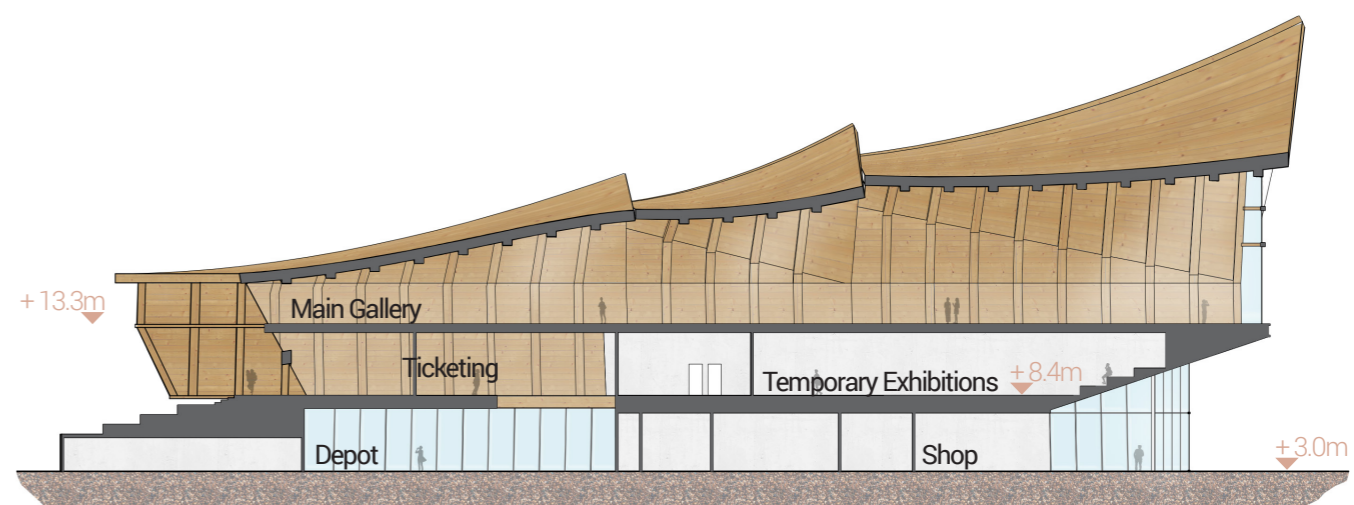


Third Level Plan | 1:400

The third level houses mechanical spaces and a mezzanine that overlooks the main gallery, offering unique views of the exhibits. An outdoor terrace connected to the events space provides a venue for gatherings with panoramic views of the city and sea. The central foyer continues to draw natural light upwards, maintaining a cohesive and open atmosphere across all levels of the museum.



Section AA | 1:300



Section BB | 1:300



Main Gallery View